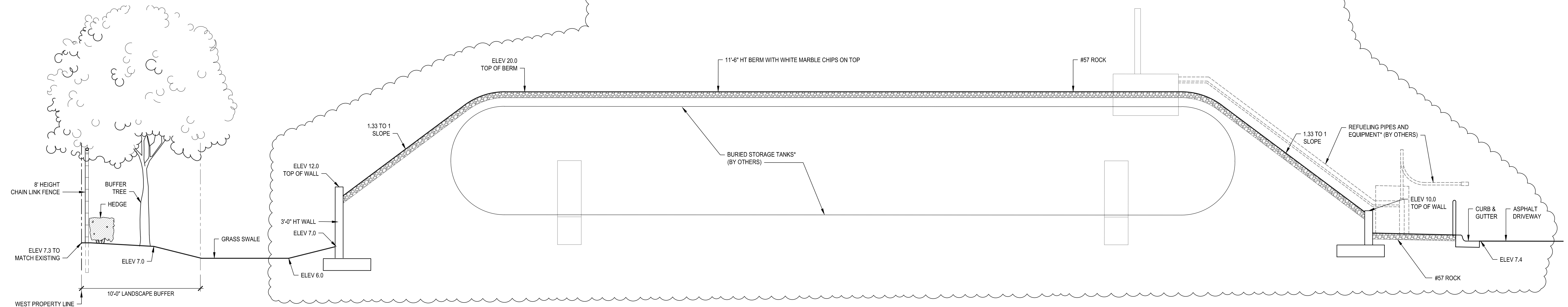


1 SECTION NORTH BUFFER

1/4" = 1'-0"

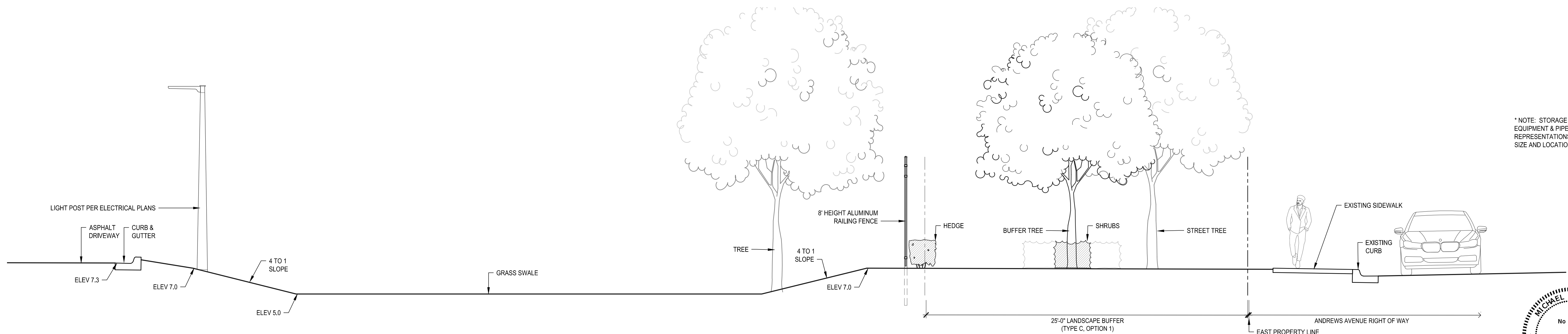
2 SECTION SOUTH BUFFER

1/4" = 1'-0"



3 SECTION WEST BUFFER

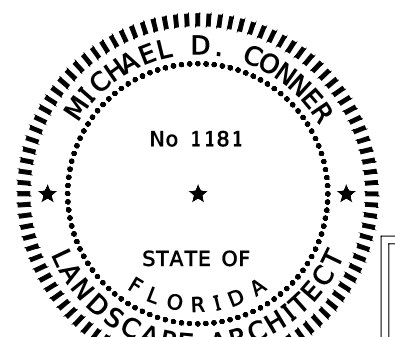
1/4" = 1'-0"



4 SECTION EAST BUFFER

1/4" = 1'-0"

\* NOTE: STORAGE TANKS AND FUELING EQUIPMENT & PIPES ARE SCHEMATIC REPRESENTATIONS FOR APPROXIMATE SIZE AND LOCATIONS IN SECTIONS.



MINOR SITE PLAN SUBMITTAL  
ELEVATIONS SHOWN ARE NAVD 88



Calvin, Giordano & Associates, Inc.  
A SAFEBUILT COMPANY  
580 Village Blvd., Suite 305, West Palm Beach, FL 33409  
Phone: 561.684.6161 • Fax: 561.684.6160

BLOSSMAN GAS COMPANY  
261 S. ANDREWS AVENUE  
POMPAÑO BEACH, FL 33069

## LANDSCAPE SECTIONS

MICHAEL CONNER, STATE OF FLORIDA REGISTERED LANDSCAPE ARCHITECT,  
LICENSE NO. 1181.  
THIS ITEM HAS BEEN DIGITALLY SIGNED AND SEALED BY MICHAEL CONNER, R.L.A.  
ON THE DATE INDICATED HERE:  
PRINTED COPIES OF THIS DOCUMENT ARE NOT CONSIDERED SIGNED AND SEALED  
AND THE SIGNATURE MUST BE VERIFIED ON ANY ELECTRONIC COPIES.  
DATE: 10/02/2025

SCALE  
AS SHOWN  
PROJECT No  
23-7806

SHEET  
L-3